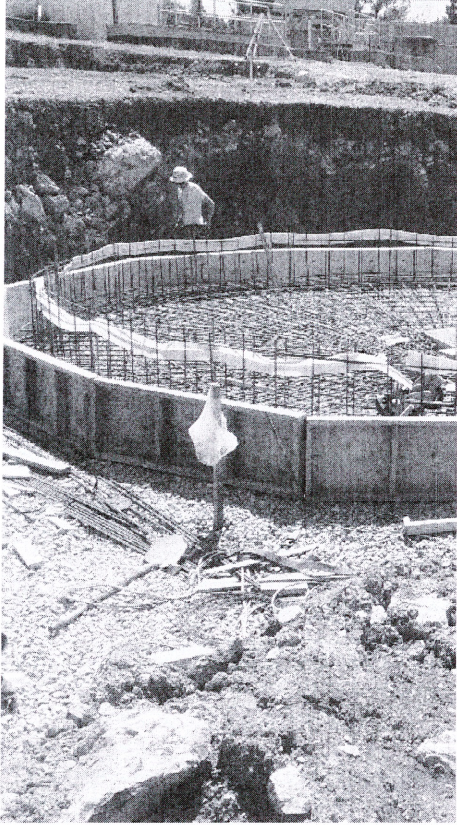


Recognized Projects



Arkansas Department of Agriculture

Project Name: Flippin Wastewater Treatment Plant

Assistance Recipient: City of Flippin, Arkansas

The City of Flippin, Arkansas, operates a wastewater treatment plant (WWTP) that discharges into the White River, a river of significant economic, recreational, and natural value that has been designated a National Blueway. The plant had been operating beyond hydraulic capacity, requiring operators to manipulate the treatment process to prevent biosolids from being discharged into the river. Operators were forced to choose between allowing effluent to exceed permit limitations or discharging untreated sludge.

This project will use \$4.1 million in CWSRF assistance to expand the capacity of the Flippin WWTP. The City will make upgrades to the WWTP including the installation of a new influent pump station, headworks, and a 0.3 MGD Sequential Batch Reactor (SBR). These improvements will enable the plant to effectively treat all the City's sewage and bring the facility into compliance. There will no longer be spillovers of untreated sewage into the White River, improving water quality and protecting public health for downstream communities and businesses. The new energy-efficient equipment will also reduce operations costs and contribute to future plant sustainability.

Photo credit: City of Flippin

Louisiana Department of Environmental Quality

Project Name: Pointe Coupee Parish Sewer District 1 Consolidation

Assistance Recipient: Pointe Coupee Parish Sewer Board

Pointe Coupee Parish Sewer Board, located in New Roads, Louisiana, operated two aging wastewater treatment plants that were failing to meet discharge limits and posed a risk to both the environment and public health. To address these issues, the Pointe Coupee Parish Sewer Board proposed to decommission the two facilities and replace them each with a new pump station and install a force main network to convey wastewater to an existing system in another district. This project also eliminates the problem of infiltration and inflow (I/I) into the system, which will reduce the loading on the system from other water sources.

To ensure adequate outreach, the Pointe Coupee Parish Sewerage District Consolidation Project engaged the community through a public hearing, worked with community leaders, and attended community events. These proactive engagements ensured the community had a voice in shaping the project's direction and outcomes, fostering a sense of ownership and support among community members. Supported by a \$1.3 million CWSRF loan, the \$4.2 million project not only improves water quality and protects public health but also supports economic development in the parish through the creation of jobs associated with the new construction.

Photo credit: Pointe Coupee Parish Sewer Board

